



milescitychamber.com

Open 9-5
Monday ~ Friday
511 Pleasant St.
Miles City, MT
(406) 234-2890



All under one roof~

- ♦ Miles City Chamber of Commerce
- ♦ Miles City Economic Development Council
- ♦ Convention & Visitor Bureau
- ♦ Tourism Business Improvement District



Download on the App Store

GET IT ON Google Play

The **FREE** Miles City APP



Area Attractions

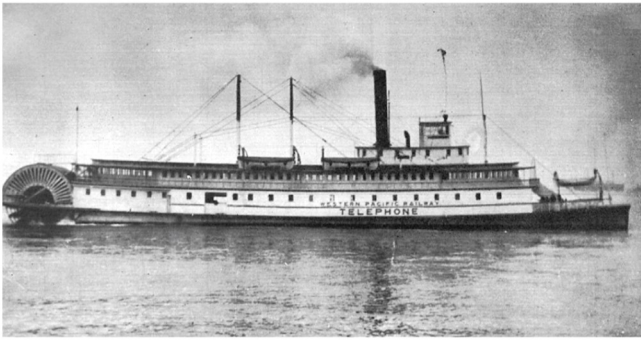
- ♦ WaterWorks Art Museum & Gallery
- ♦ Range Riders Museum
- ♦ Historic Miles City Academy
- ♦ Tongue River Winery
- ♦ Town & Country Club Golf Course
- ♦ Riverside Park & Natural Oasis
- ♦ Hermann Stieffel Mural - Riverside Park
- ♦ Spotted Eagle Recreation Site
- ♦ Matthews Recreation Site
- ♦ Roche Jaune Fishing Access
- ♦ Pirogue Island State Park
- ♦ 12-Mile Dam on the Tongue River
- ♦ Strawberry Hill Rec. Area
- ♦ Yellowstone Jewel & Camp 21
- ♦ Parks, Sports, Fishing, Agate Hunting....
- ♦ Walking Paths
- ♦ Antiques, Agates, and so much more!



Just a few of our Annual Events

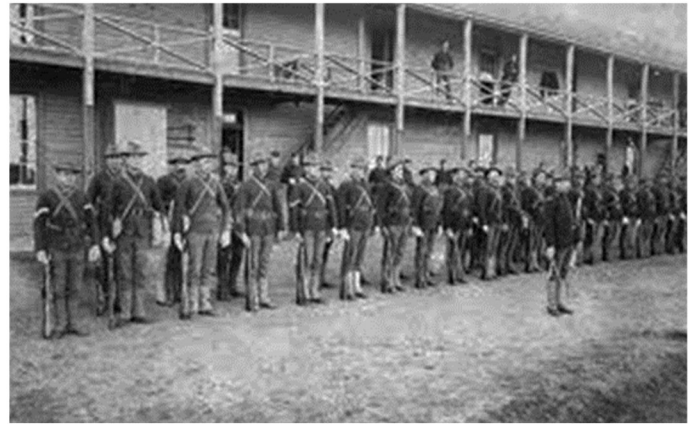
- ♦ Cowtown Beef Breeders Show
- ♦ World Famous Bucking Horse Sale
- ♦ BBQ Cook-Off & Ryno-Palooza Music Festival
- ♦ Miles City Bluegrass Festival
- ♦ High Plains Classics Car Show
- ♦ Miles City Ranch Rodeo
- ♦ Cowtown Moosic Festival
- ♦ Eastern MT Fair
- ♦ Christmas Stroll
- ♦ Sporting Events, Concerts, Plays, and so much more

MILES CITY MONTANA



The confluence of the Tongue and Yellowstone Rivers is rich in history. It was well known to Indian tribes, fur traders, and explorers. Captain William Clark camped near the mouth of the Tongue on July 29, 1806. Steamboats carrying immigrants, soldiers, and goods, traversed its course.

In early June 1876, Generals Custer and Terry conferred aboard the steamer, Far West, near what was to become Miles City. Custer and his men set out for the long march that was to end in disaster at the Little Bighorn on June 25, 1876. As a direct result of this battle and the influx of soldiers, Fort Keogh and Miles City were founded. Saloons, dance halls, bordellos, boarding houses, and general stores serviced the population of soldiers, buffalo hunters, bullwhackers, muleskinners, cowboys, and Indians.



The Northern Pacific Railroad arrived in 1881. Miles City became a destination for herds from as far away as Texas. The railroad provided direct shipping to packing plants in the east. Even though ranchers had lost more than half of their herds in the harsh winter, the town incorporated in 1887.

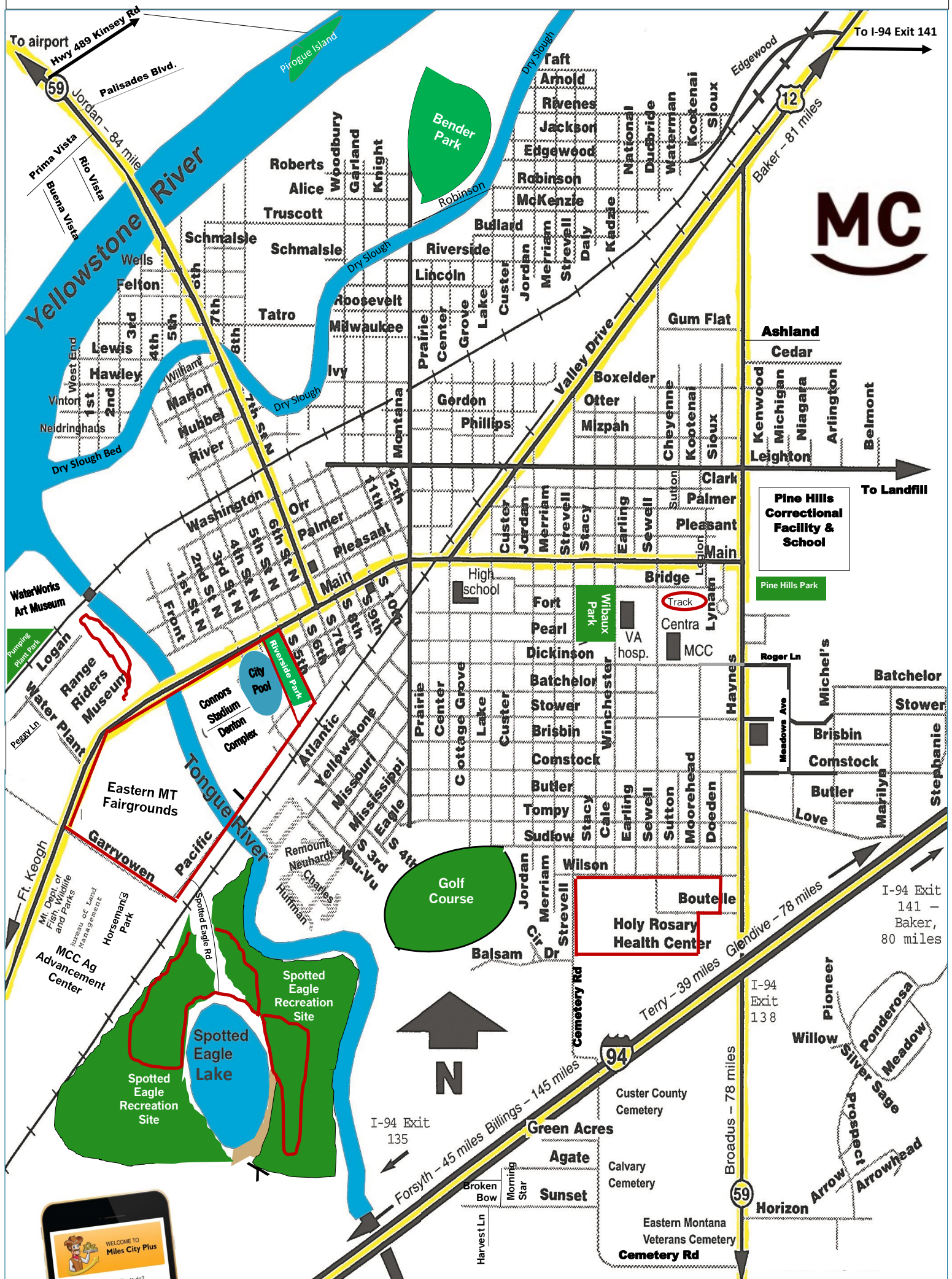
The Main Street buildings reflect the growth spurts of the town. Fort Keogh served as a remount station during World War 1, and Miles City became the largest horse market in the world.



Miles City has earned its place in history, from early explorers and frontiersmen to soldiers and ranchers, Miles City grew where two rivers met; the Yellowstone and Tongue Rivers. Miles City is proud of the parks, rivers, and historical sites that provide recreational fun and adventure for everyone. Visit us and discover why we are truly a Legendary Western Town.



Welcome to Miles City! We're glad you're here!



Miles City Area Chamber of Commerce & Visitor Information Center

511 Pleasant St—Miles City, MT 59301

(406) 234-2890

www.milescitychamber.com



Download on the App Store

GET IT ON Google Play

The **FREE** Miles City APP



					
	<i>Miles City Restaurants</i>				
4 B'S RESTAURANT	FAMILY DINING		1406 S HAYNES AVE	406-232-5772	
600 CAFÉ	FAMILY DINING	6am-2pm Daily	600 MAIN ST	406-234-3860	
AIRPORT INN	PIZZA, FINGER STEAKS, BURGERS-GAME RM.		HWY 59 NORTH	406-234-9977	
ARBY'S	FAST FOOD		306 S. HAYNES AVE	406-232-8874	
BLACKIRON GRILL & ROTISSERIE	FINE DINING		2901 BOUTELLE	406-234-4766	
BUY-MT	LUNCH ONLY - Wraps, Haystacks, Gyros, and Ice Cream		819 MAIN ST	406-234-1915	
CELLAR CASINO	PIZZA & BURGERS		719 MAIN ST	406-234-5611	
DAIRY QUEEN	FAST FOOD		503 S HAYNES AVE	406-234-2685	
DOMINOS PIZZA	PIZZA		1111 S. HAYNES AVE	(406) 852-5544	
GALLAGHER'S FAMILY RESTAURANT	FAMILY DINING		1215 S HAYNES AVE	406-234-0099	
LITTLE CAESAR'S PIZZA	PIZZA		3010 STOWER ST	406-234-6222	
MAIN STREET GRIND	COFFEE, BAKERY, SANDWICHES, SOUP, BURGERS		709 MAIN ST	406-234-4664	
MAMA STELLAS	PIZZA & SANDWICHES		607 MAIN ST	406-234-2922	
MCDONALD'S	FAST FOOD		1120 S HAYNES AVE	406-232-0775	
MEXICO LINDO	MEXICAN		713 S HAYNES AVE	406-232-3485	
NEW HUNAN CHINESE FOOD	CHINESE & AMERICAN FOOD		1710 S HAYNES AVE	406-232-3338	
PIZZA HUT	PIZZA & WINGS/ with weekday Lunch Buffet		3009 STOWER	406-232-6130	
RANGE RIDERS CAFÉ	PIZZA, BURGERS, SANDWICHES		605 MAIN ST	(406) 234-2922	
REMEMBER WHEN CAFÉ	LUNCH ONLY - Sandwiches, burgers, soup		813 MAIN ST	406-234-7878	
REYNOLDS MARKET DELI	DELI FOODS / no seating		2106 VALLEY DR E.	406-234-5385	
SEABECK PIZZA	PIZZA & SANDWICHES		216 S LAKE AVE	406-232-2525	
SCOOP MT	SANDWICHES, WRAPS, SOUP, ICE CREAM		819 MAIN ST	406-234-1915	
SUBWAY	SANDWICHES		300 ROGER LANE	406-234-9764	
TACO JOHN'S	FAST FOOD		911 S. HAYNES AVE	406-234-2627	
THE UGLY MUG COFFEE SHOP	COFFEE, BAKERY,		115 N. 7TH	(406) 874-8459	
TILTWÜRK'S BREWHOUSE	BREWERY & PUB GRILL		420 PACIFIC	406-874-8458	
TOWN & COUNTRY CLUB	FINE DINING - FRIDAY AND SATURDAY ONLY		4TH & EAGLE AVE	406-234-1500	
TUBBS PUB	BURGERS, STEAKS, AND MORE		612 MAIN ST	406-874-8822	
UNCLE MIKE'S BBQ & GRILL	COMING SOON....				
WENDY'S RESTAURANT	FAST FOOD		210 S. HAYNES AVE	406-232-7231	
YELLOWSTONE TAVERN	PIZZA, CHICKEN, SHRIMP-CASINO, GAME RM. & POOL TABLES		3008 VALLEY DR EAST	406-234-7764	



Riverside Park - West Main St.

- Covered shelter & Gazebo
- Band Shell **No Dogs**
- Playground & Walking Path
- Restrooms
- Benches & Picnic tables
- Herman Steiffel Mural
- Farmer's Market on Saturdays

City

Parks

Wibaux Park - South Strevell Ave.

- Covered Shelter & Restrooms
- Playground & Wading Pool
- Benches & Picnic tables **No Dogs**
- Coming in 2020:



Hilleman Park—85 Water Plant Rd.

- Concrete picnic tables
- Restrooms
- Horse-shoe pit

Bender Park - N. Montana

- Softball & Soccer Fields
- Playground & Restrooms



Milwaukee Park Disc Golf Course

Lincoln & N. Prairie Ave

- 9-hole Disc Golf Course, designed for new players and kids

Pine Hills Park - South Haynes Ave.

200 N. Haynes Ave. (next to Verizon)

- Playground
- Picnic tables

Triangle Park

N. Montana & Leighton Blvd.

- Playground

Cook Lake—West Main St.

- Coming soon...walking path
- No motorized boats

Miles City Walking Paths



Fairgrounds/Riverside Walk

Parking is available by the lake, baseball fields, tennis courts or 5th St.

Loop	Distance	~Cal. Burned
Red	1.8 miles	180 per lap
Blue	2.0 miles	200 per lap



Miles Community College Track

Parking is available off S. Sewell Ave. on the west side of the track.

Loop	Distance	~Cal. Burned
Track	¼ mile	25 per lap



Holy Rosary Walk (Story Walk)

Start anywhere along the loop. Parking is available on Wilson St., by the community garden or at the hospital. This is a great walk for families; has a story walk, so you can read to the little ones while you walk!

Loop	Distance	~Cal. Burned
Sidewalk	1.3 miles	130 per lap



Pirogue Island State Park

Directions: Take 7th St. North (becomes MT-59) for 2.2 miles. Turn right (North) on MT-489 (Kinsey Rd.). After 1.5 miles, turn right. Drive 0.7 miles.

Loop	Distance	~Cal. Burned
Outer Loop	2.25 miles	225



Spotted Eagle Recreation Area

Directions: Take Garryowen Rd. heading west. Turn south on Spotted Eagle Rd. (south of fairgrounds)

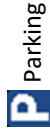
Loop	Distance	~Cal. Burned
Dirt Trail	0.7 miles	70 per lap
Lake Loop	1.44 miles	144 per lap



Range Riders Museum Path

Plenty of parking, start by the long barn

Loop	Distance	~Cal. Burned
Mown path	3/4 mile	70



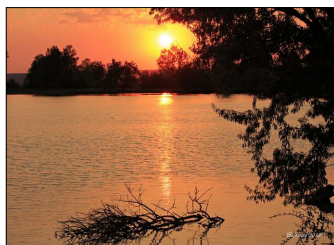
SPOTTED EAGLE RECREATION AREA

Activities

- * Picnic Tables & Restrooms
- * Life Jackets available for loan
- * Walking Trails
- * Swimming - No Lifeguards
- * Non-motorized Boating
- * Fishing
- * Docks



Open 6am—10pm daily / all year
Spotted Eagle Rd & Garryowen Rd
Behind the Eastern MT Fairgrounds



123 acre property and 23 acre lake are owned by the City of Miles City. The local Chapter of Walleyes Unlimited and the CC Rod & Gun Club contribute most of the maintenance and care of the facility, and are responsible for most of the structures on the site. Call Police Dispatch, at 232-3411, to report damage.

STRAWBERRY HILL RECREATION AREA

Strawberry Hill Recreation Area is accessed by way of US Hwy 12. The recreation area is approximately 4,248 acres consisting of grass, sage and ponderosa pine. There are unique rock formations and a view of the Yellowstone Valley. This is a popular spot for enjoying scenic views, wildlife watching, and hiking. Be mindful of seasonal and area fire restrictions. Visitors may park at the entrance or follow a primitive road leading into the area.

- Primitive overnight camping permitted
- No facilities on site
- No fireworks allowed
- No dumpsters—All garbage must be removed
- Pack in / Pack out

Maintained by:
Bureau of Land Management
111 Garryowen Rd
Miles City, MT 59301
(406) 233-2800



MATTHEWS RECREATION AREA

The Matthews Wildlife Habitat Management Area, seven miles east of Miles City on Hwy 10, has been designed primarily to serve the handicapped. Trail length is approximately 0.4 miles.

The Yellowstone River can be accessed by canoe or kayak; however, no improved boat launch facilities are present. Fishing, bird watching and wildlife viewing are frequent activities at this site.

This is a typical Yellowstone River riparian area where cottonwood, green ash and willow tree species dominate near the riverbank, flanked by open-grassy meadows. A seasonally-running irrigation return canal loops through the area.

- Handicap Accessible
- Accessible fishing platform
- Concrete trails
- Restrooms & Picnic Tables
- Covered area & Grills
- Overnight camping permitted
- No dumpsters—All garbage must be removed
- Interpretive Kiosk
- No Fireworks allowed



Maintained by:
Bureau of Land Management
Miles City, MT 59301
(406) 233-2800

PIROGUE ISLAND STATE PARK

Isolated, and shaded by cottonwood trees, this Yellowstone River island offers visitors an excellent spot to view waterfowl, bald eagles, fox squirrels, whitetail and mule deer, and hunt for Moss Agates. There are 2.8 miles of designated hiking trails, but the site is level and visitors can easily walk throughout the entire 269 acres. During hot weather, when the side channels aren't flowing, adventurous visitors can take a nice refreshing tree-shaded walk down the side channels punctuated with wading the remaining pools of water.

At 2,371 feet in elevation, this site has no formal development and care is needed when crossing side channels. Crossing is not recommended if water is flowing across the side channel.

- Grills / Fire Rings
 - Interpretive Display
 - Pets Allowed
 - Pack In – Pack Out
 - Toilets (vault)
- Directions: From Miles City, travel north on MT-59, 2 miles to MT-489 / Kinsey Rd. Turn right for approximately 2 miles to well-marked turn off to Pirogue Island.
- Note: If the river is high, and flowing across the side channel, crossing is NOT recommended.**

Maintained by:
MT Dept of Fish Wildlife & Parks
Miles City, MT 59301
(406) 234-0900



TWELVE-MILE DAM

Twelve-Mile Dam is a state fishing access site on the Tongue River of southeast Montana. There is a campground with tent and trailer sites. Facilities are limited to restrooms, with no drinking water available. There is a handicap-accessible fishing pier, and boat ramp. Campers are limited to a 7-day stay.

- Existing ADA Level: Easy Accessibility.

Directions: Twelve Mile Dam is located 12 miles south of Miles City on Highway 59, then 1 mile south on the Tongue River Road, Highway 332.

Activities

- Tent Camping
- Boating
- River Fishing
- Camping
- Fishing
- Services
- Boat Launch
- Handicapped Accessible
- Pack In / Pack Out



Maintained by:
MT Dept of Fish Wildlife & Parks
Miles City, MT 59301
(406) 234-0900

ROCHE JAUNE - FISHING ACCESS SITE

A naturally deposited gravel bar has restricted use of boat ramp to high water conditions (10,000 cfs or higher).

Open year around, the Roche Jaune Fishing access is located on North 6th Street in Miles City, just to the east of the Yellowstone Bridge.

Activities

- Boating, Fishing
- Boat Ramp
- Toilet
- Pack In / Pack Out



Maintained by:
MT Dept of Fish Wildlife & Parks
Miles City, MT 59301
(406) 234-0900